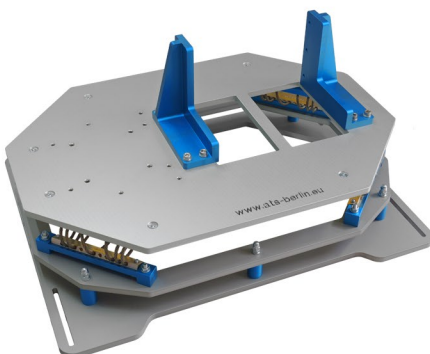


# Airborne Technical Systems

Specialist in the field  
of airborne remote sensing technology

development  
construction  
integration

accurate  
innovative  
reliable





**up to 5 x 150 Megapixel  
with cameras from  
Phase One**

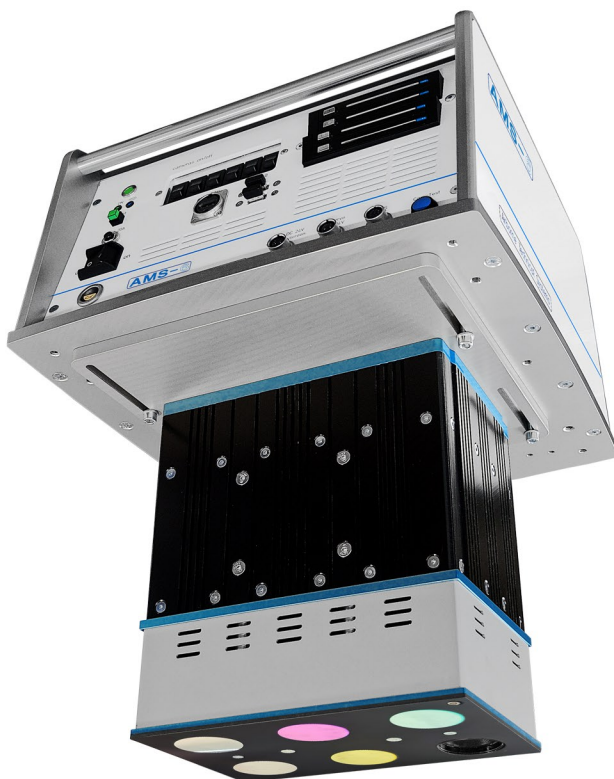
#### **Aero Oblique System (AOS)**

The Oblique Camera System AOS from ATS is equipped with five cameras, four oblique cameras and one nadir camera. The AOS has a modular design and can be equipped with all Phase One cameras, the Hasselblad A6D-100c camera and the Nikon D850 cameras. The AOS can be configured for any mission profile and budget. The AOS can be operated in all platforms with a diameter of at minimum 390 mm, for example into the platforms of Somag AG GSM 4000 / 3000 / 2000. Each AOS contains a mounting base for an IMU. The AOS can be controlled with all flight management systems, it has five exchangeable SSD hard disks with a capacity up to 4 TB.

#### **ATS**

integration partner of

**PHASE ONE  
INDUSTRIAL**



**Airborne multispectral  
camera**

#### **AMC-6**

The AMC-6 is a world first, it is a high-resolution multispectral aerial camera, it has six cameras with 30 megapixels each, eight spectral channels are captured. The AMC-6 contains five monochrome cameras and one RGB camera. The AMC-6 can be mounted on all stabilisation platforms such as a GSM4000 from SOMAG. It can be controlled with all known flight management systems such as the CCNS/5 from IGI. If higher resolutions are required, the AMC-6 can also be equipped with cameras from Phase One. The spectral filters of the monochrome cameras can be changed by the customer, even if the AMC-6 is installed in the aircraft.

**Airborne Technical Systems**  
<http://www.ats-berlin.eu>



## Camera controller for Phase One cameras

### CC-G5

The CC-G5 is a small, compact camera controller for the iXM cameras from Phase One. (<https://geospatial.phaseone.com>) Up to two cameras can be connected to the CC\_G5. The controller is equipped with a stabilised internal power supply for the cameras and the monitor. All settings for the cameras can be made using the Phase One iX-Capture software installed on the CC-G5. The CC-G5 is equipped with an i7 intel processor, 32 GB RAM and a 4TB removable SSD hard drive. This configuration enables very high performance storage for high-resolution image data from Phase One's iXM cameras.



## Complete solution for airborne remote sensing

### AC-8-Gyro complete system

The AC-8 Gyro Overall System includes three sensors, a RGB camera, a thermal imaging camera and a hyperspectral sensor. The entire system is modifiable according to customer requirements. The system is developed for the gyrocopters Cavalon.



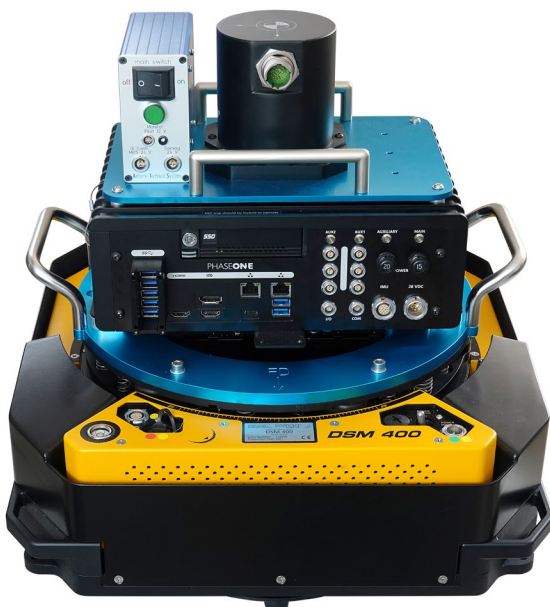
- vibration-damped system and sensor platform to install all components in the gyrocopter
  - battery pack for a system test on the ground without running the engine
  - power supply and distribution unit to connect all systems to the board power
  - computer with i7 processor to control the remote sensing sensors
  - monitors to control and monitor the systems
  - AC-8-Cam, 45 MP aerial camera
  - installation option for the Riegl scanner Q560, Q680 and Q780
  - mounting option for IMU
  - easy and fast installation
- (approx. 1 hour to 2 hours, depending on the sensors needed)

## High-resolution aerial camera system

### AC-280

The AC-280 is a complete system with the high-resolution Phase One aerial camera iXM-RS280F, the Phase One iX controller MK5/ MK6 with the Applanix IMU/GNSS AP310(IMU82) and the PhaseOne software IX Plan and IX Flight /iX Suite. This camera system is supplied complete with the DSM 400 stabilisation platform from Somag AG. The AC-280 complete system can be supplied with different configurations according to customer requirements.

<https://geospatial.phaseone.com/cameras/ixm-rs280f/>  
<https://www.somag-ag.de/products/airborne-gyro-mounts/dsm-400/>



**Airborne Technical Systems**  
<http://www.ats-berlin.eu>





## Remote controllable power supply for airborne remote sensing systems

### APU

#### Remote Control Power Supply System from ATS

the ATS power supply system can be adapted to the individual requirements of the customer. they are developed and manufactured are optionally remote controllable. All plug systems can be installed according to customer requirements, such as Lemo or Mill. The devices can be delivered with or without accumulator. In the delivery program we also have stand-alone accumulators.

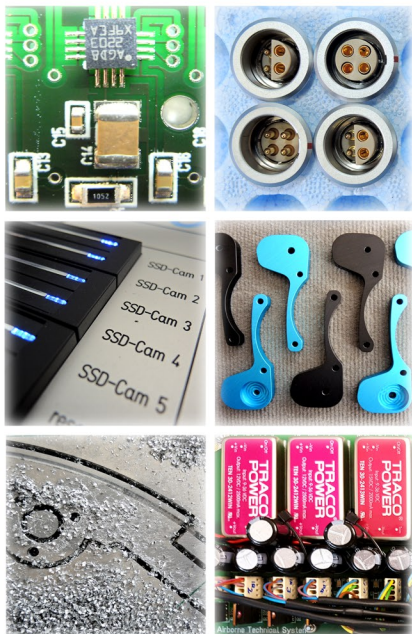
Our power supply system can be used in helicopters or airplanes, With APU systems, remote sensing equipment can be started up and tested before the engine starts. During the refueling break, your systems do not have to be shut down, which saves a lot of time.

#### here are some example data:

- input voltage: DC 22V – 30V
- output: 24V DC 7x, max. 30A total
- output: 230V AC max. 250W
- LAN switch Ethernet 4x 1Gb
- battery capacity: 2x 12V 12Ah
- dimensions APU 4.0: W: 520mm, H: 153mm, D: 400mm
- weight with battery: 25 Kg
- weight without battery: 17 Kg
- dimensions APU RC 4.0: W: 170mm, H: 90mm, D: 35mm

you can find more information at: [www.ats-berlin.eu](http://www.ats-berlin.eu)

accurate  
innovative  
reliable



## Development, construction and production from one hand

All from one hand

any mechanical work we make with our own CAD-milling machine and lathe from the CAD drawing up to the completed system. In the field of electronics, we can manufacture everything from wiring diagrams up to our own SMD-circuit boards ourselves. For programming, we have our own software developer. In this way, we are flexible and can respond individually to customer needs.



**Airborne Technical Systems**  
<http://www.ats-berlin.eu>

Rheinsberger Str. 59  
D-10115 Berlin  
Germany

fon: (+49/30) 4432 4295  
fax: (+49/30) 4473 7663  
fu: +49/171 630 25 96  
email: [hp@ats-berlin.eu](mailto:hp@ats-berlin.eu)